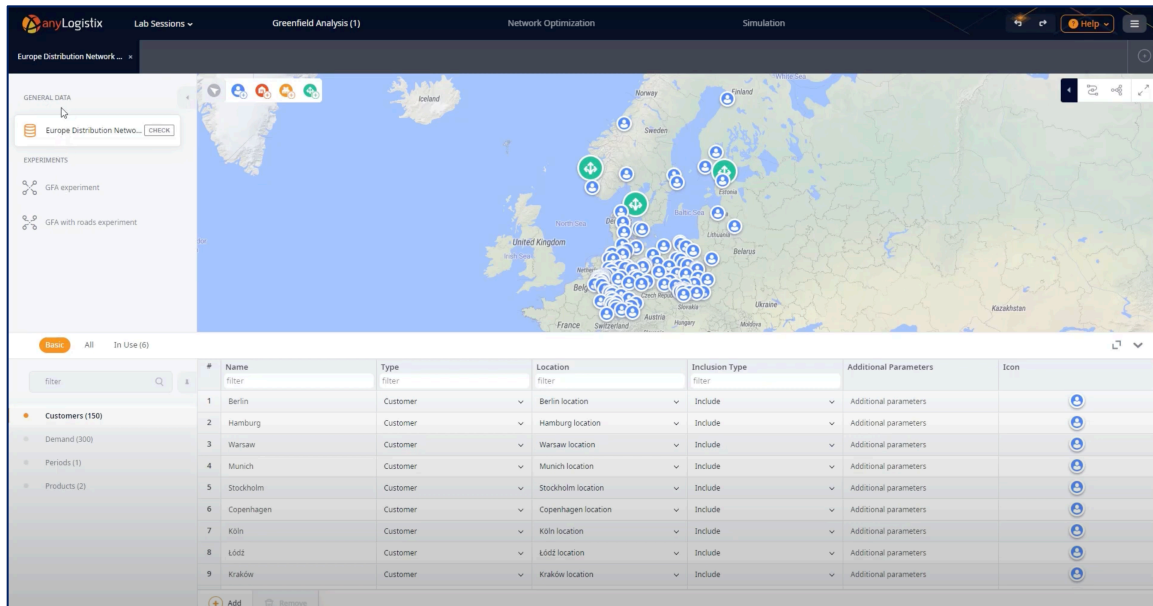




Getting Started with anyLogistix Software: Video Introduction and Learning Guide



1. Before You Begin

- Watch this step-by-step guided video on YouTube: <https://youtu.be/-5bfAoxI9Ak>
- For the best experience, enable **English subtitles** and adjust the video quality to **HD** in the YouTube settings.
- This video was created using an earlier version of anyLogistix. Some interface elements have been updated in later versions. These changes are minor, and the updated steps should still be intuitive. Key differences include:
 - The **welcome page**, project creation, and scenario import interfaces have been updated.
 - **Model selection** has moved from the top menu to the left-hand corner under the “**All types**” button.
 - The combined “**DCs and Factories**” data table is now split into two separate tables: “**Distribution Centers**” and “**Factories.**”
 - The interface for adding **charts and tables** to simulation results has been revised.



2. Purpose of the Video

This video introduces the anyLogistix software, providing a quick tour to help you familiarize yourself with the platform's interface, core features, and functionalities. To demonstrate the platform's functionalities, we utilize an example project called 'Europe Distribution Network', emphasizing the Greenfield Analysis (GFA) feature to show how the software aids in optimizing supply chain networks.

3. Key Learning Points

By watching this video, you will learn:

- **Introduction:** Understanding the main sections of the anyLogistix interface, including the workspace, menu options, and analysis tools.
- **Features:** This section examines how the platform's various features, including project setup, data inputs, and visualizations, interact.
- **Functions:** Grasping how to navigate different tabs and data tables, run experiments, and generate reports for supply chain analysis.

4. Exercise Questions

After watching the video and practicing the case, take some time to reflect on your learnings and answer the following questions. Be prepared to discuss your answers during the next lab session:

- **Platform:** What are the main sections of anyLogistix platform? Describe their purposes and functionalities.
- **Analytics:** Identify three key analytics models in anyLogistix. How do they support decision-making?
- **Application:** How can you apply the insights from this video in real-world scenarios?